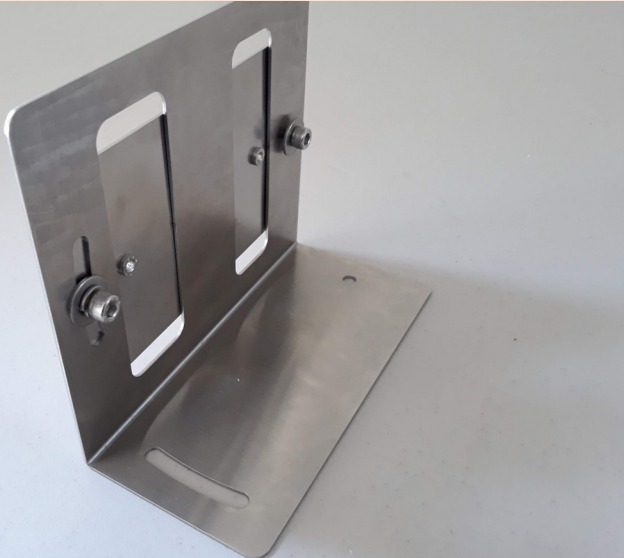
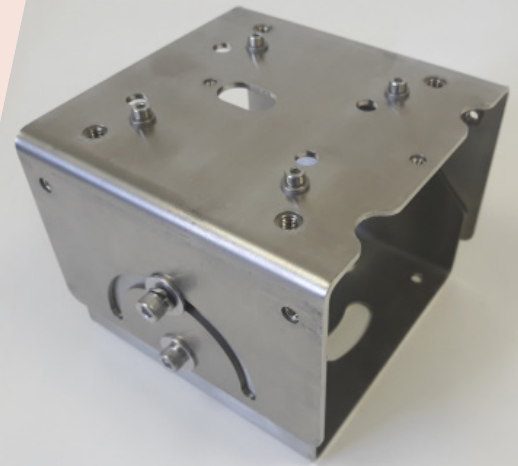


## Adjustable Mounting Bracket

- ⊕ Part # 000812-02
- ⊕ Applicable for all D-Series Lasers
- ⊕ Ideal for harsh environments, such as steel mills and atop cranes
- ⊕ Allows for dual-axis alignment
- ⊕ Ability to pivot a full 90° for wall mounting
- ⊕ 300-Series Stainless Steel, 2.5mm thick



## L-Bracket

- ⊕ Part # 000968-02
- ⊕ Applicable for all D-Series Lasers
- ⊕ Allows for dual-axis alignments
- ⊕ 300-Series Stainless Steel, 1.5mm thick

## Alignment Bracket

- ⊕ Part # 500308
- ⊕ Applicable for all D-Series Lasers
- ⊕ Steel, zinc-plated
- ⊕ Allows for dual-axis alignment +/-4°; planar adjustment permits dual-axis adjustment simultaneously via spring tensioned adjustment bolts

